



Bartels AutoEngineer®

Version 6.8

Highlights

This document contains illustrated information about significant new features introduced with **Bartels AutoEngineer Version 6.8**.

Bartels AutoEngineer Version 6.8 Highlights

Published by: Bartels System GmbH, Erding

Last printing: October 2006

The information contained in the **Bartels AutoEngineer** publications as well as the products and/or programs described therein are subject to change without notice and should not be construed as a commitment by Bartels System.

Although Bartels System has gone to great effort to verify the integrity of the information provided with the **Bartels AutoEngineer** publications, these publications could contain technical inaccuracies or typographical errors. Bartels System shall not be liable for errors contained therein or for incidental consequential damages in connection with the furnishing, performance or use of this material. Bartels System appreciates readers' and/or users' comments in order to improve these publications and/or the products described therein. Changes are periodically made to the information therein. These changes will be incorporated in new editions of the **Bartels AutoEngineer** publications.

All rights reserved. No part of the **Bartels AutoEngineer** publications may be reproduced, stored in a retrieval system, translated, transcribed or transmitted, in any form or by any means manual, electric, electronic, electromagnetic, mechanical, chemical, optical or otherwise without prior express written permission from Bartels System.

Bartels AutoEngineer®, **Bartels Router®** and **Bartels Autorouter®** are registered trademarks of Bartels System. **Bartels User Language™** and **Bartels Neural Router™** are trademarks of Bartels System. All other products or services mentioned in this publication are identified by the trademarks or service marks of their respective companies or organizations.

Copyright © 1986-2006 by Oliver Bartels F+E

All Rights Reserved

Printed in Germany

Contents

Bartels AutoEngineer® Version 6.8 Highlights.....	1
Schematic Editor Symbol Selection with Symbol Preview.....	5
Layout Editor Part Selection with Part Preview.....	6
Toolbar Grid Favorites Configuration.....	7
Toolbar File Element Favorites Configuration.....	7
SCM Plot Preview with Pen Width.....	8
Layout Plot Preview with Pen Width.....	8
Graphic Cursor Info Tooltips.....	8
Polygon Point List Editor.....	9
Element-specific DRC Clearance Display Option.....	10
Gridless Trace DRC Snap.....	11
3-D Graphic Export to WRL/VRML1.0.....	12

Schematic Editor Symbol Selection with Symbol Preview

Library Element Name ?

Macro Name :

Project File :

- 10pol
- 16r8
- 16rp8
- 16v8
- 286
- 386sx
- 387sx
- 74f04
- 74f373
- 74f74
- array8
- att_pw
- c
- planhead
- r
- tag_net_nettype

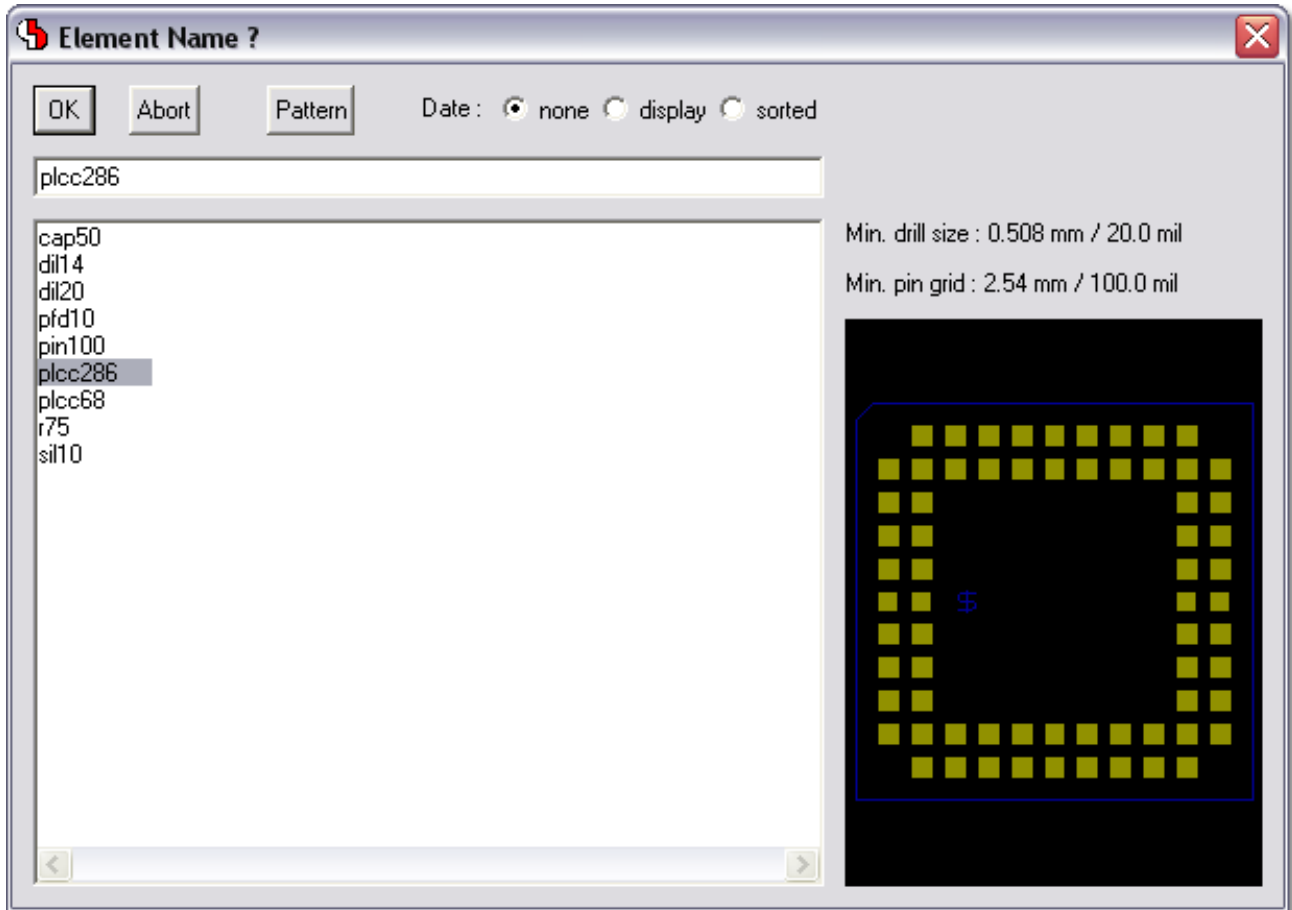
Library 'maxim.ddb' :

- icl7660
- max118
- max232a
- max2510
- max2620
- max2640
- max2660
- max2680**
- max3080e
- max3100
- max5186
- max639
- max713
- max860
- max961
- max962
- max962_sup

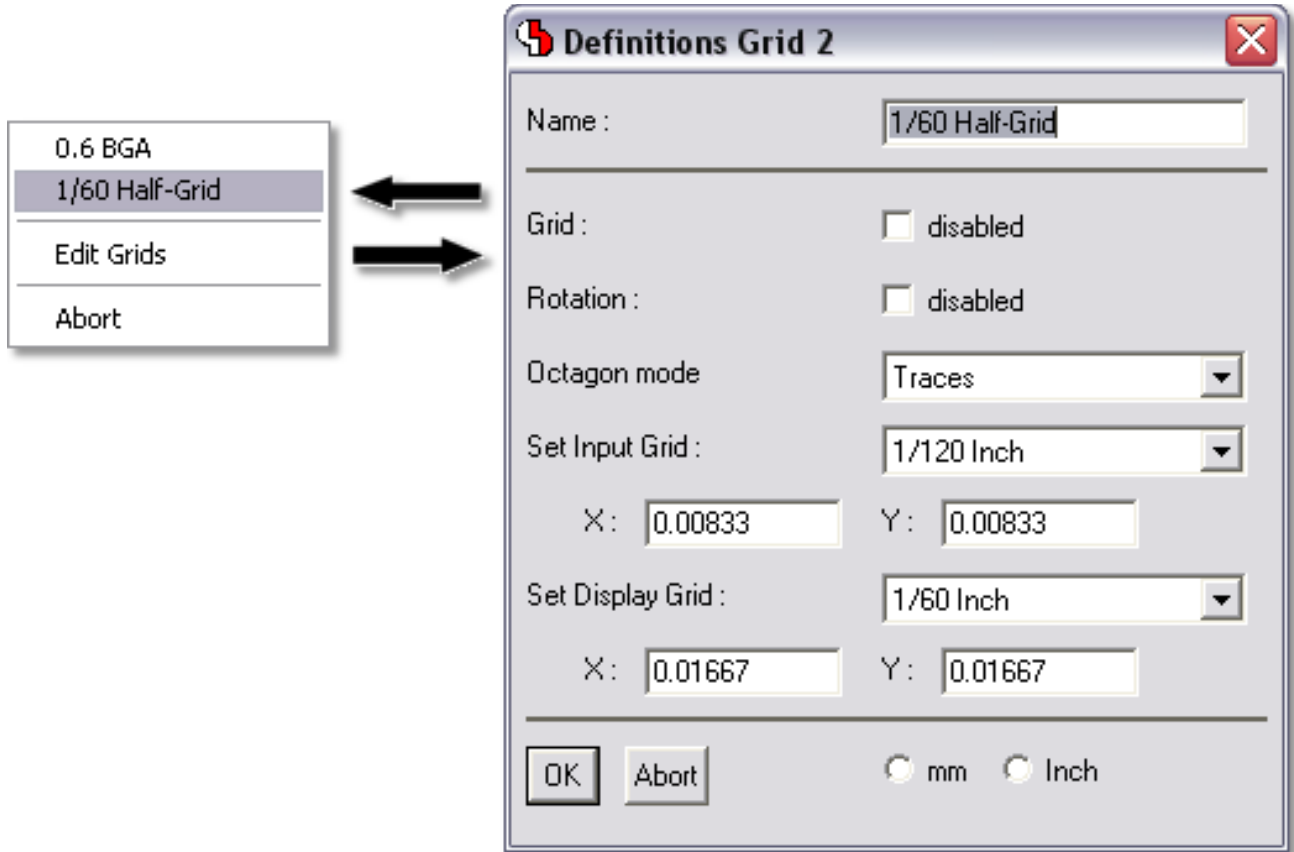
Library Directory :

- hitachi.ddb
- idt.ddb
- intel.ddb
- intersil.ddb
- laylib.ddb
- linear.ddb
- logledit.ddb
- lsc.ddb
- lt.ddb
- maxim.ddb**
- mc.ddb
- memory.ddb
- micron.ddb
- misc.ddb
- nsc.ddb
- opto.ddb
- pal.ddb
- passiv.ddb
- philips.ddb
- rfdm.ddb
- route.ddb
- siemens.ddb

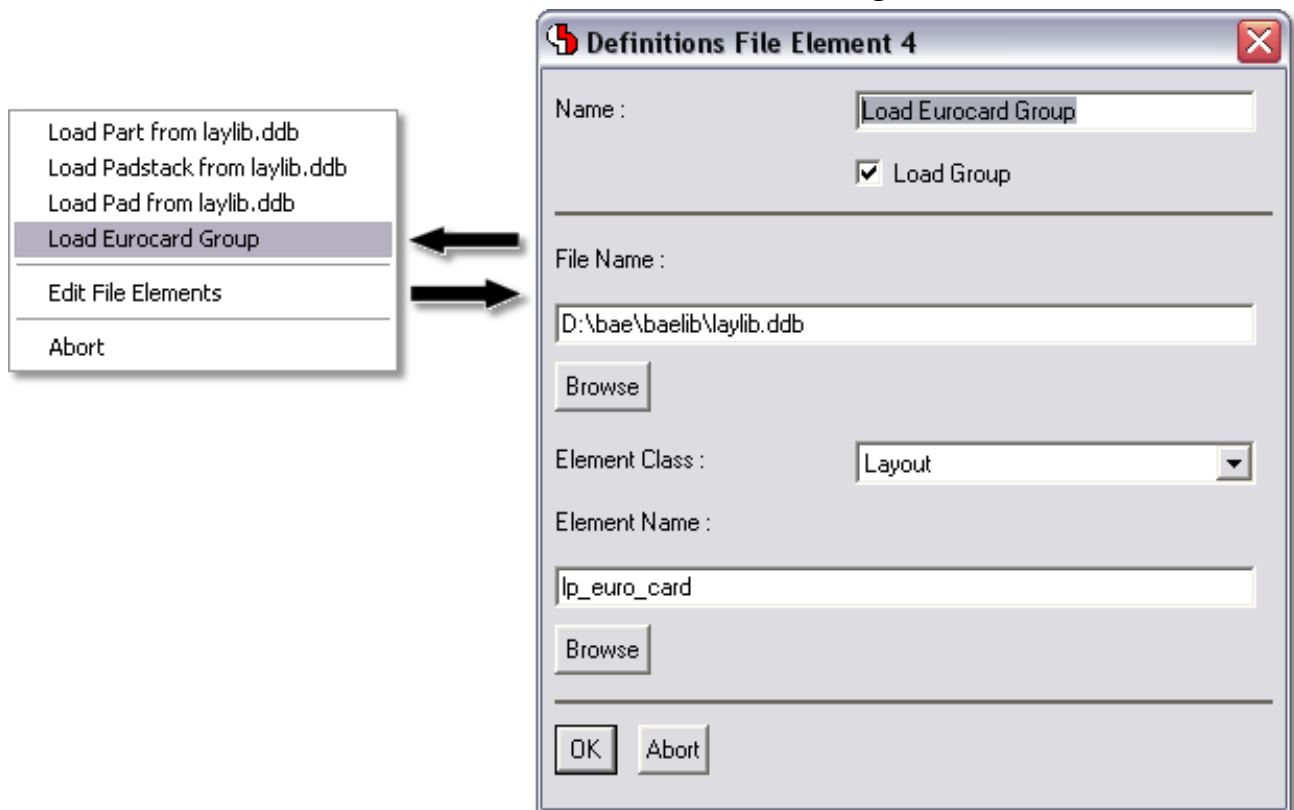
Layout Editor Part Selection with Part Preview



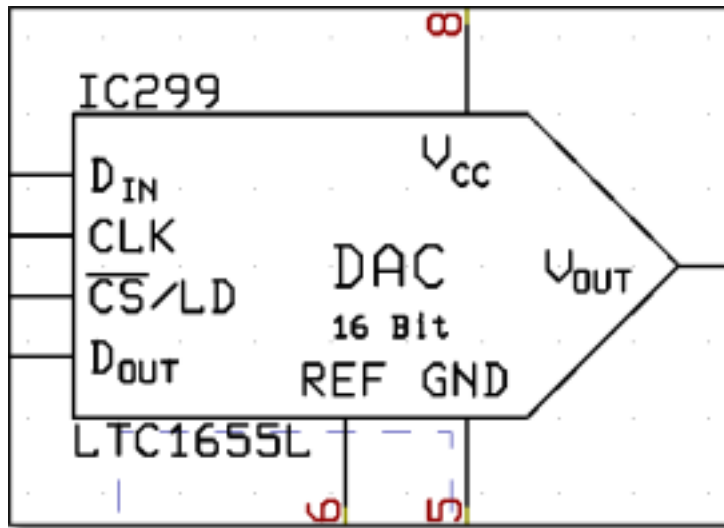
Toolbar Grid Favorites Configuration



Toolbar File Element Favorites Configuration



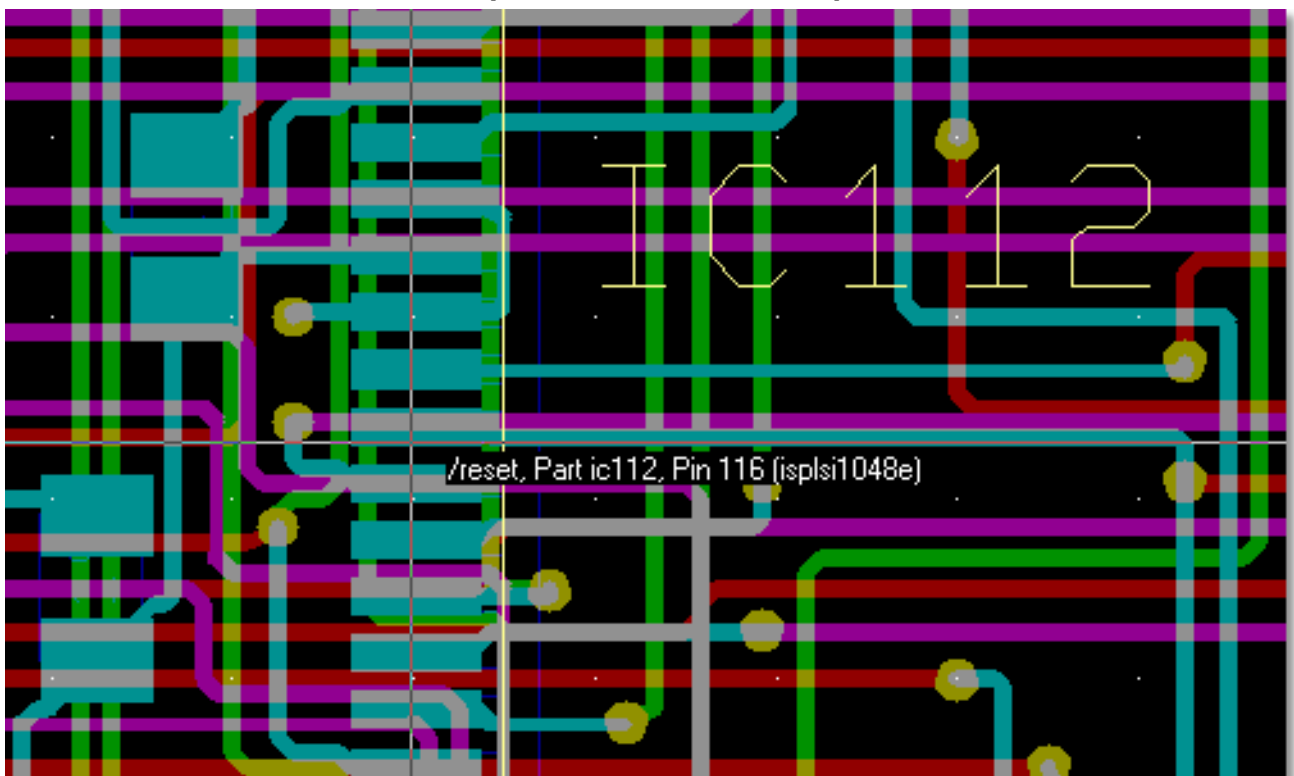
SCM Plot Preview with Pen Width



Layout Plot Preview with Pen Width



Graphic Cursor Info Tooltips



Polygon Point List Editor

Set Data

Polygon Type : Copper Fill Area Priority : 0

Sub Type : ----- Fill Settings

Layer Signal Layer 1

X: 2.325 5 of 5 < >

Y: 0.85

Net Name : vcc Browse

Height : -----

Pen Width : -----

Fixation : off on

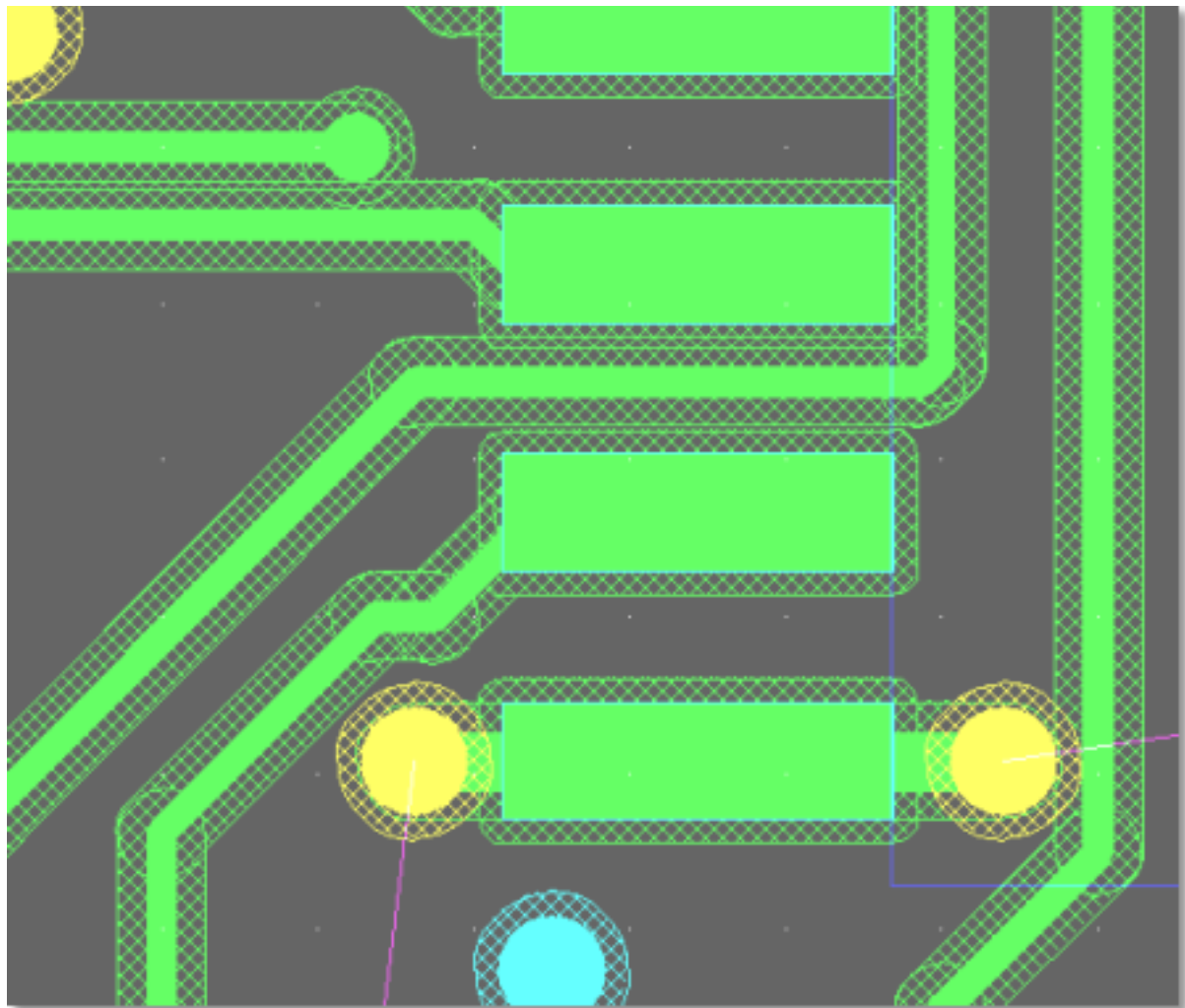
Glue : off on

Group Name : Browse

PDF/WRL Color : BAE-Selection

OK Abort mm Inch Rules

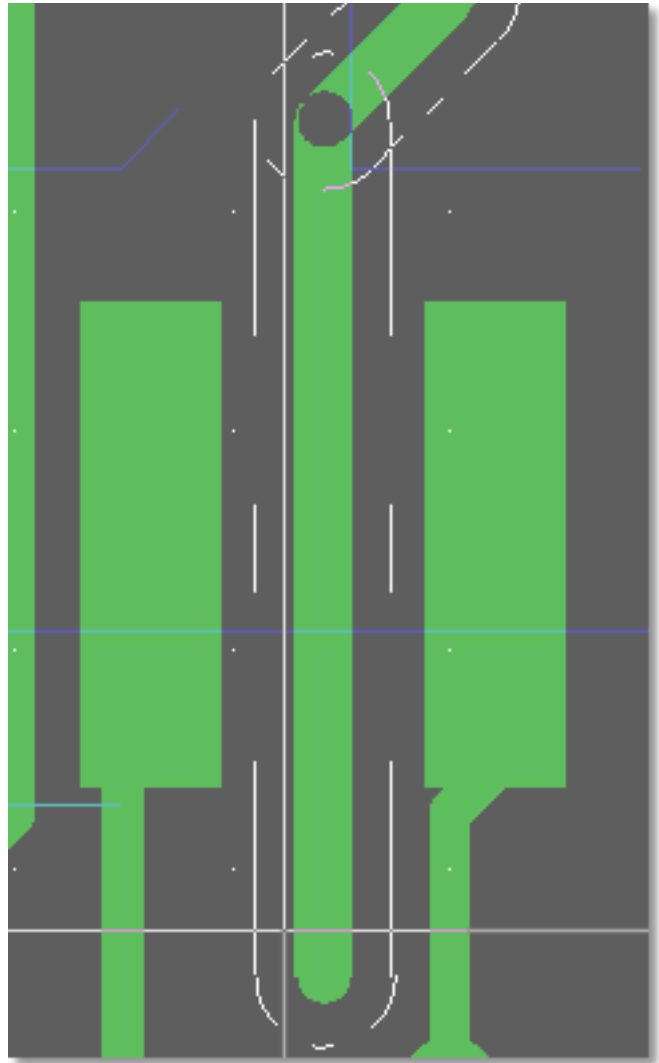
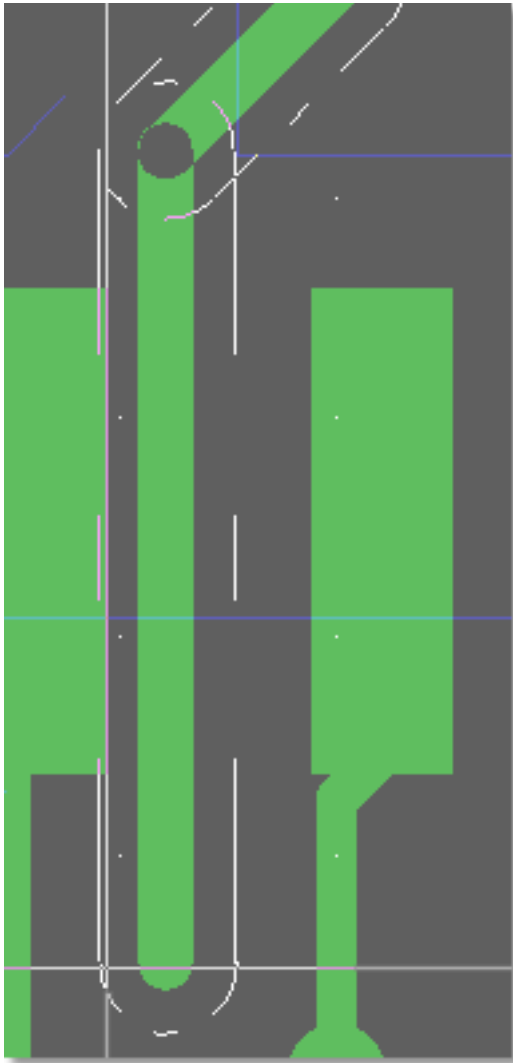
Element-specific DRC Clearance Display Option



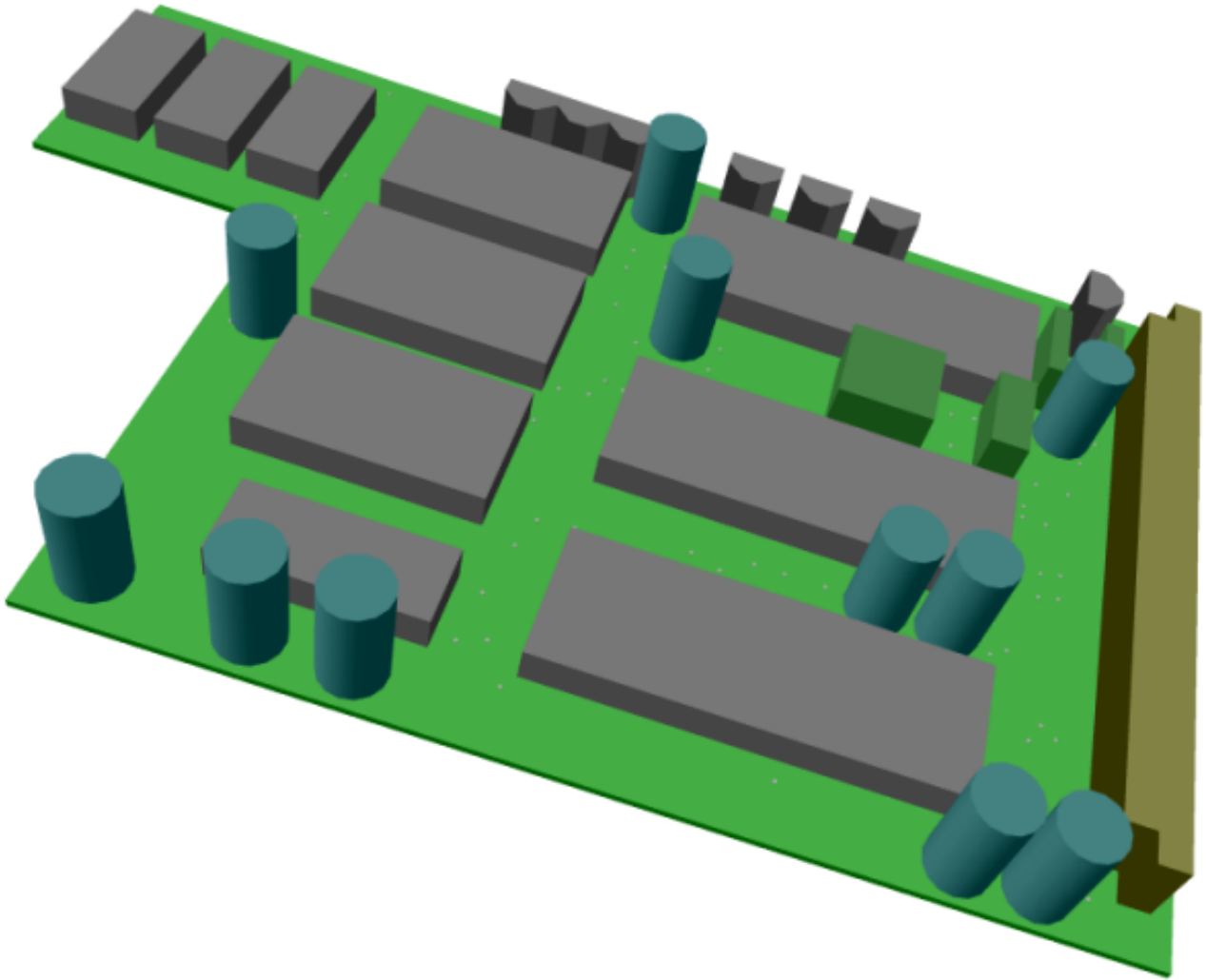
Gridless Trace DRC Snap

Gridless routing alongside obstacle edges

Trace centered between obstacles



3-D Graphic Export to WRL/VRML1.0



Please see the **Bartels AutoEngineer® Version 6.8 Release Notes** for a detailed description of all new BAE Version 6.8 features.