



# **Bartels AutoEngineer®**

## **Version 6.6**

### **Highlights**

---

This document contains illustrated information about significant new features introduced with **Bartels AutoEngineer Version 6.6**.

---

**Bartels AutoEngineer Version 6.6 Highlights**

Published by: Bartels System GmbH, Erding

Last printing: October 2005

The information contained in the **Bartels AutoEngineer** publications as well as the products and/or programs described therein are subject to change without notice and should not be construed as a commitment by Bartels System.

Although Bartels System has gone to great effort to verify the integrity of the information provided with the **Bartels AutoEngineer** publications, these publications could contain technical inaccuracies or typographical errors. Bartels System shall not be liable for errors contained therein or for incidental consequential damages in connection with the furnishing, performance or use of this material. Bartels System appreciates readers' and/or users' comments in order to improve these publications and/or the products described therein. Changes are periodically made to the information therein. These changes will be incorporated in new editions of the **Bartels AutoEngineer** publications.

All rights reserved. No part of the **Bartels AutoEngineer** publications may be reproduced, stored in a retrieval system, translated, transcribed or transmitted, in any form or by any means manual, electric, electronic, electromagnetic, mechanical, chemical, optical or otherwise without prior express written permission from Bartels System.

**Bartels AutoEngineer®**, **Bartels Router®** and **Bartels Autorouter®** are registered trademarks of Bartels System.

**Bartels User Language™** and **Bartels Neural Router™** are trademarks of Bartels System. All other products or services mentioned in this publication are identified by the trademarks or service marks of their respective companies or organizations.

Copyright © 1986-2005 by Oliver Bartels F+E

All Rights Reserved

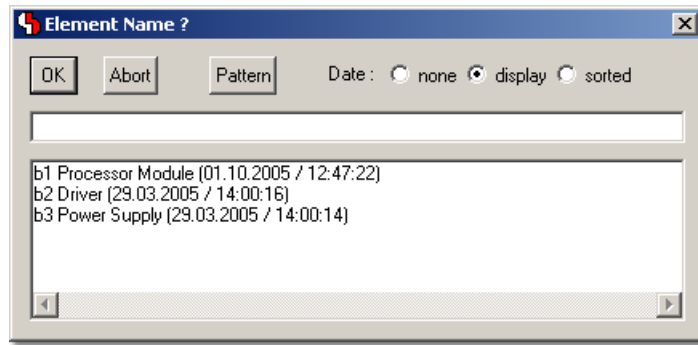
Printed in Germany

## Contents

Element Selection with Comment and Date Display .....	5
Symbol Logic Editor with interactive Pin Assignment.....	5
Automatic Bus Definition for Symbol Bus Pin Connections .....	5
Symbol Database with Symbol Preview .....	5
Symbol Context Menus programmable through Symbol Library Definitions .....	6
Toolbar Text Placement Function with Text/System Attribute List.....	6
Warnings issued when connecting named Nets .....	6
Toolbar with Element Access History and Preference Layer Display .....	7
Horizontal/Vertical Measuring Function .....	7
Trace Antenna Recognition .....	7
Element Manipulation Dialogs through p Key .....	8
Autorouter with improved SMD Pin Routing Algorithms .....	9
PDF Output with Layer Info (for Adobe Reader 6+) .....	9
Dialog for Net Group DRC Assignments (BAE HighEnd).....	9



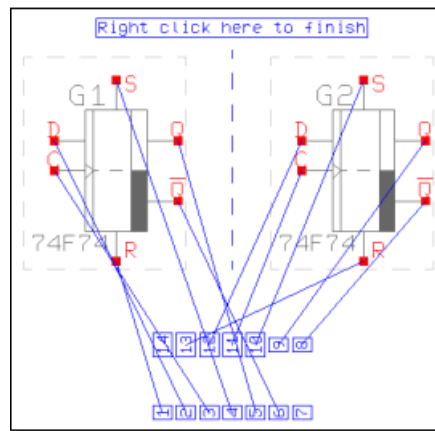
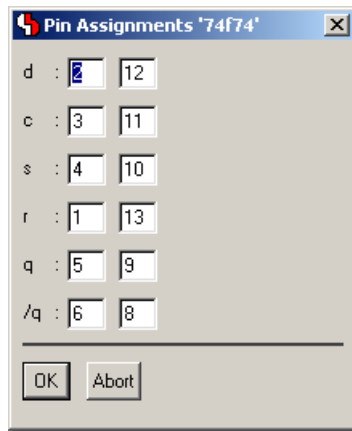
### Element Selection with Comment and Date Display



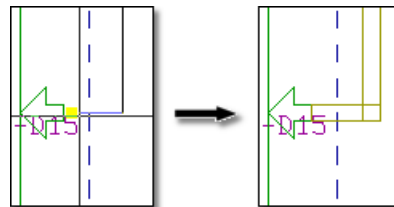
### Symbol Logic Editor with interactive Pin Assignment

Pin Assignments Table

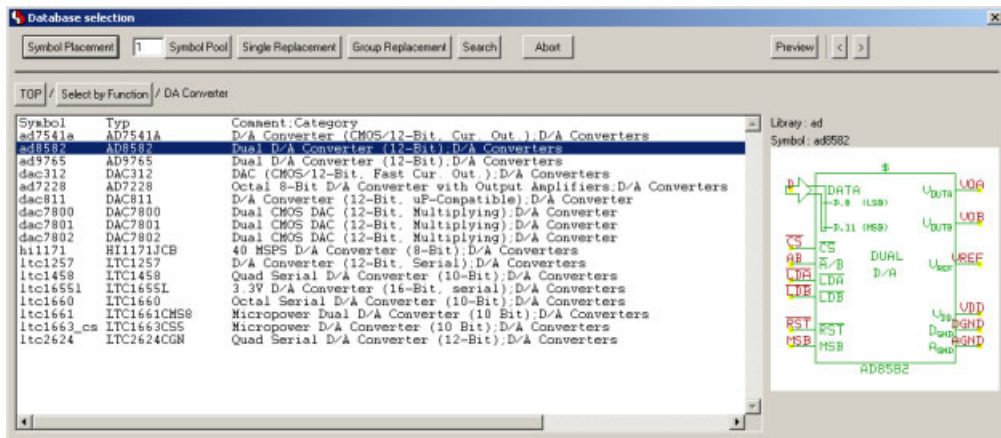
Pin Assignments graphically



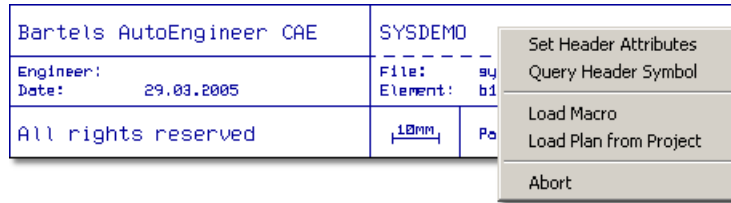
### Automatic Bus Definition for Symbol Bus Pin Connections



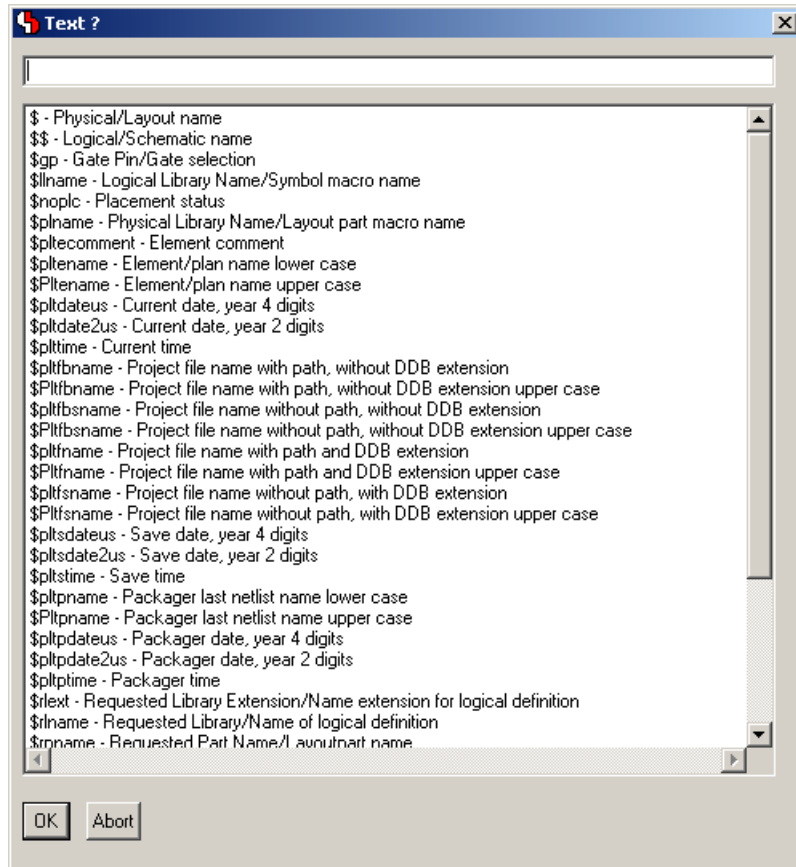
### Symbol Database with Symbol Preview



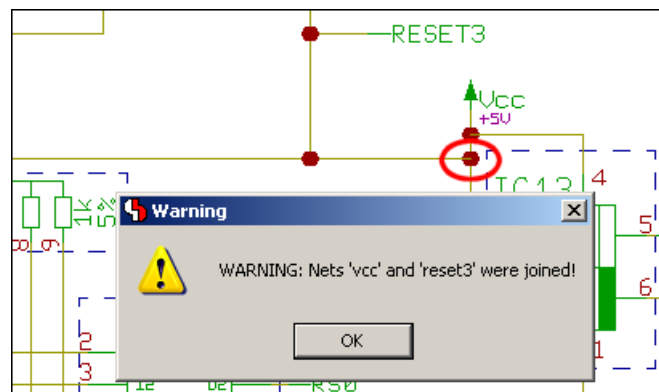
### Symbol Context Menus programmable through Symbol Library Definitions



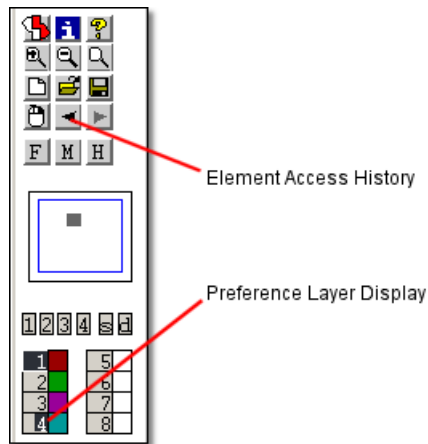
### Toolbar Text Placement Function with Text/System Attribute List



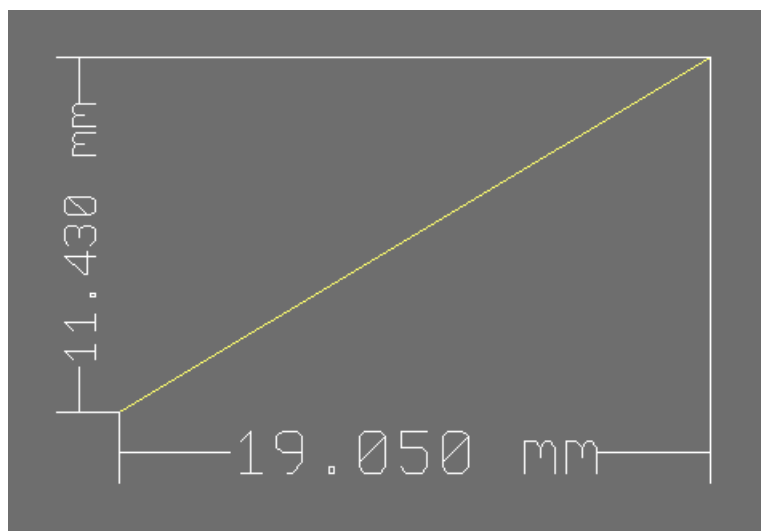
### Warnings issued when connecting named Nets



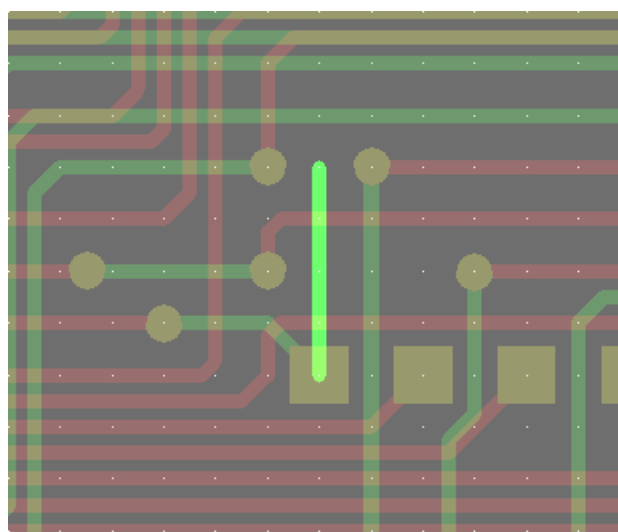
### Toolbar with Element Access History and Preference Layer Display



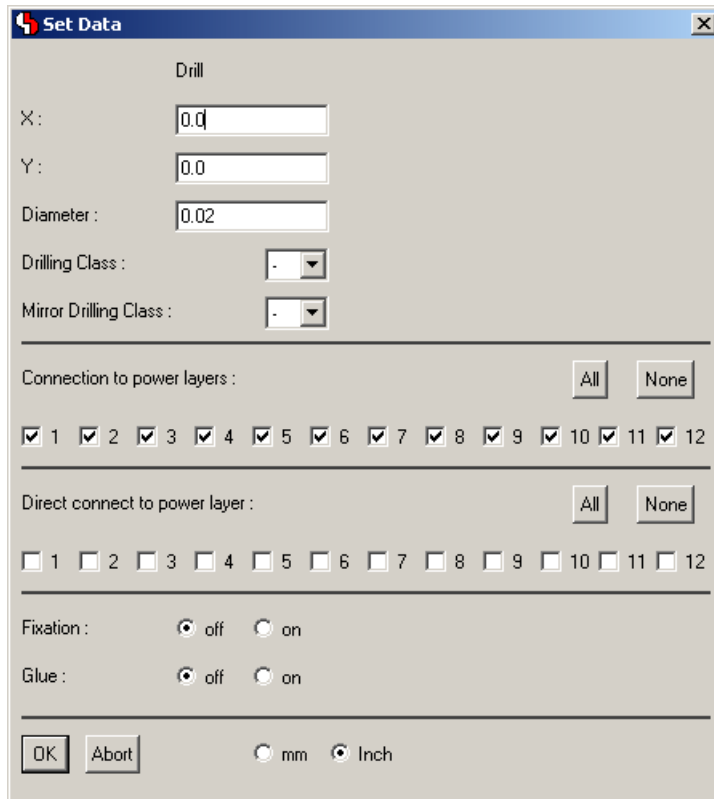
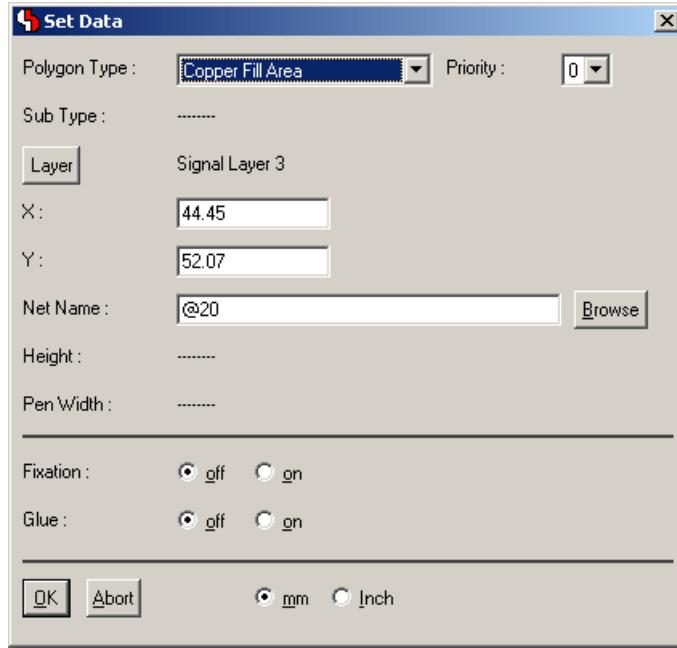
### Horizontal/Vertical Measuring Function



### Trace Antenna Recognition



### Element Manipulation Dialogs through p Key

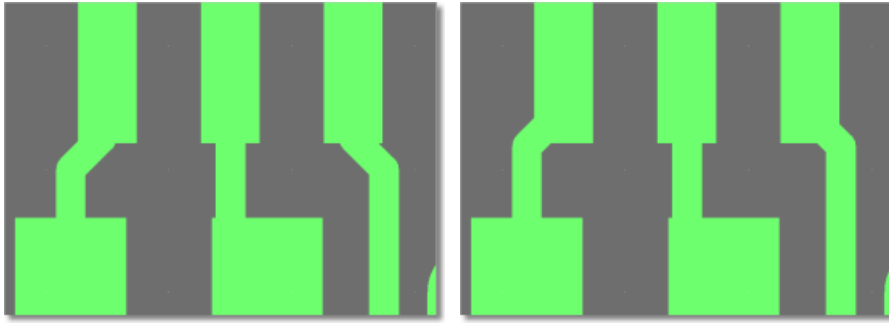




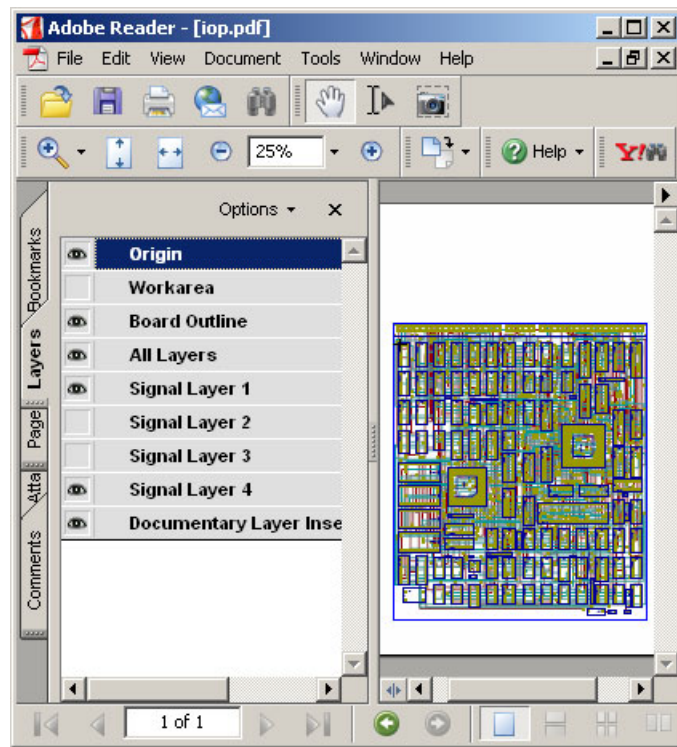
### Autorouter with improved SMD Pin Routing Algorithms

SMD Pin Routing prior to BAE V6.6

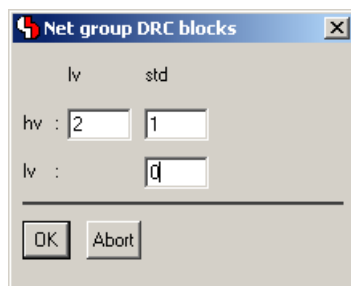
SMD Pin Routing in BAE V6.6



### PDF Output with Layer Info (for Adobe Reader 6+)



### Dialog for Net Group DRC Assignments (BAE HighEnd)



Please see the **Bartels AutoEngineer® Version 6.6 Release Notes** for a detailed description of all new BAE Version 6.6 features.